

# TUNNEL GUARDRAIL BG

## TUNNEL GUARDRAIL

SPECIALLY DESIGN NED TO PROTECT PEDESTRIANS FROM HEAVY OBJECTS THAT MAY FALL DUE TO BEING STACKED AT A HEIGHT, GENERATING EFFETIVE PROTECTION AGAINST HIGHER INCIDENCE HAZARDS, AS WELL AS PROTECTION OF FORKLIFT TRAFFIC THAT COULD IMPACT PEDESTRIANS ON TRAFFIC LANES. DEPENDING ON THE REQUIREMENTS, IT CAN BE ANCHORED TO A SIDE WALL OR SELF-SUPPORTING, GENERATING A PROTECTION TUNNEL.

## TECHNICAL INFORMATION

<b>Effective Protection Height</b>	Up to 280cm
<b>Lenght</b>	According to Requirement
<b>T° Range</b>	-20°C a 70°C
<b>Surface Finish</b>	Yellow Electrostatic Paint
<b>Anchor Type</b>	1/2" x 4 1/4" Anchor Bolt (4 units per base)
<b>Materiality</b>	ASTM A36 Steel / NR Rubber

## IMPACT ABSORPTION

ENERGY ABSORPTION THANKS TO THE MATERIAL'S ACTIVE MEMO RY



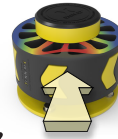
x



4,0Ton

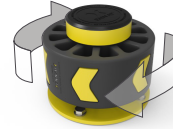
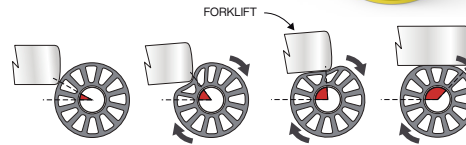
5,3 Mph

IMPACT OVER THE RUBBER PROTECTED BASE

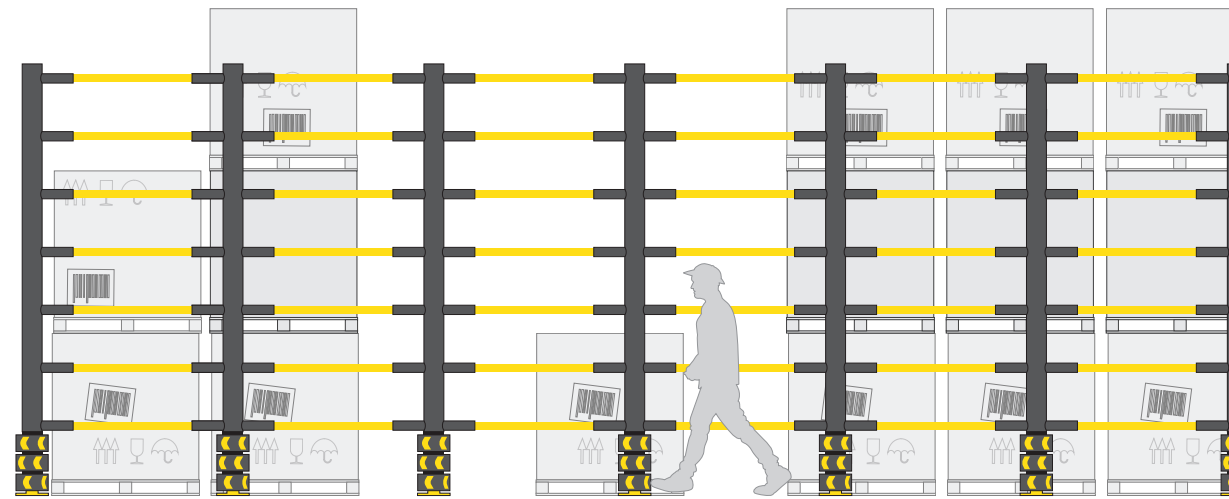
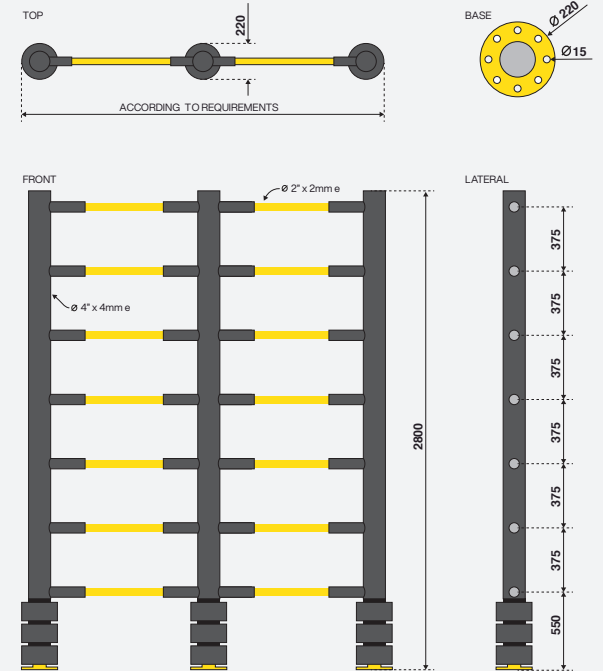


## ROTATION

FUNCTIONALITY TO REDIRECT THE FORKLIFT FORWARD DIRECTION



## DIMENSIONS (mm)



\* LENGTHS AND CONFIGURATION ACCORDING TO SPECIFIC REQUIREMENTS